

MEMBER APPRECIATION & THOMPSON OPEN HOUSE

- Delicious Meal & Dessert
- Bucket Truck Rides
- Gifts, Drawings, & Giveaways
- Facility Tours

Open House & Member Appreciation Join us Monday, August 3rd in Thompson

Inside This Issue



Shine The Light Contest Open to HPC Members

Nominate local volunteers this June!

Page 2



2026 Scholarship Recipients

Fourteen graduating seniors receive scholarships from Heartland Power Cooperative.

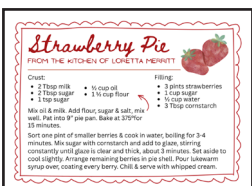
Page 3



Built for Reliability

How loop feeds help us restore power safely and efficiently during storms.

Page 5



Strawberries Galore

Enjoy these member-submitted recipes for a fun summertime treat!

Page 6



Jon Leer
CEO/General Manager

Summer is here, and so is one of our favorite events at Heartland Power! We're excited to invite you to our Open House & Member Appreciation Event on Monday, August 3, from 4:00 to 7:00 p.m. at our new facility in Thompson.

Join us as we welcome members to tour the new office and shop facilities while enjoying an evening of food, fun, and community. Guests can enjoy a free meal, sweet treats, giveaways, energy-related information, and family-friendly activities for all ages.

Feeling adventurous? Don't miss the chance to take in the view from above with a bucket truck ride!

At Heartland Power, our members are at the heart of everything we do, and this event is one small way we can say thank you for your continued support. We look forward to seeing you in Thompson for an evening of celebration, connection, and fun. Watch for more details in upcoming newsletters and on Facebook!



AUGUST 3, 2026
4-7 PM



NEW THOMPSON
FACILITY

FAQ

Who can make a nomination?

Member-consumers and employees of any Iowa electric cooperative are eligible to enter the contest in June and nominate a local community volunteer. (If you receive electricity from an Iowa electric co-op, you are a member-consumer and eligible to nominate.) You must be at least 18 years old to make a nomination. Limit one entry per electric co-op account/household.

The local Iowa volunteer you are nominating does not need to be an electric co-op member-consumer. Minors may be nominated with consent from their parents or legal guardians. Nonwinners from a previous year may be nominated again.

What do the winners receive?

A panel of judges will review all eligible contest entries and select up to three Iowa winners, who will be announced in September. A \$3,000 donation will be made in each winner's name to their local charity or nonprofit organization.

Additionally, winners will be featured in the September issue of Iowa Electric Cooperative Living magazine which is mailed out to more than 55,000 rural Iowa households and businesses.

How to Enter:

Contest entries will be accepted online from June 1 to June 30. You'll need to provide your contact information, your electric co-op affiliation and your nominee's contact information.

The application will also ask you to answer this question in 500 words or less: How has your nominee made a difference in the community and how might the local charity/nonprofit use the \$3,000 donation?

Visit www.IowaShineTheLight.com to nominate a volunteer this June!

SHINE THE LIGHT ON COMMUNITY SERVICE

Iowa's electric cooperatives are once again conducting a contest to celebrate our local volunteers. The Shine the Light contest is an opportunity for member-consumers and employees of Iowa's locally-owned electric cooperatives to nominate someone who's making a positive difference in their community.

The Iowa volunteer you nominate during the month of June could be one of three winners who will each receive a \$3,000 donation for their local charity or community organization.



NOMINATE A VOLUNTEER THIS JUNE

www.IowaShineTheLight.com

Last Year's Statewide Winners



Gerry Holtrup, Hospers
Partners for Patriots



Aimee Goeman, Belmond
Build a Better Belmond - Pool Fund



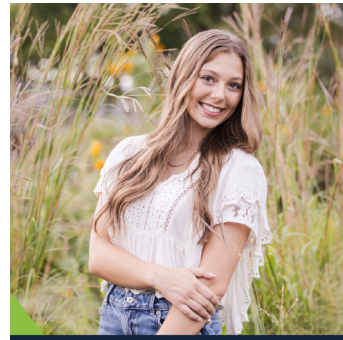
Chuck Bildstein, Anamosa
Chelsey's Dream Foundation

2026 Heartland Power & Lineman Scholarship Recipients

Congratulations and Best Wishes to the Class of 2026

Powering Future Success

Each year, we're proud to support outstanding local students through our scholarship program. In 2026, Heartland Power Cooperative awarded eleven \$1,000 scholarships to graduating seniors, along with three lineman scholarships for students pursuing a career in the power industry. These scholarships are a reflection of our ongoing commitment to empowering the next generation of leaders, innovators, and community members. Congratulations to all of this year's recipients, and best wishes in your future endeavors!



Joslyn
BORMANN

2026 Scholarship Recipient



Scarlett
BYRNES

2026 Scholarship Recipient



Sage
CHRISTENSEN

2026 Scholarship Recipient



Lydia
KOCH

2026 Scholarship Recipient



Stella
LACKORE

2026 Scholarship Recipient



Addison
MARCKS

2026 Scholarship Recipient



Ava
MEINDERS

2026 Scholarship Recipient



Ethan
PETERSON

2026 Scholarship Recipient



Quinn
STREET

2026 Scholarship Recipient



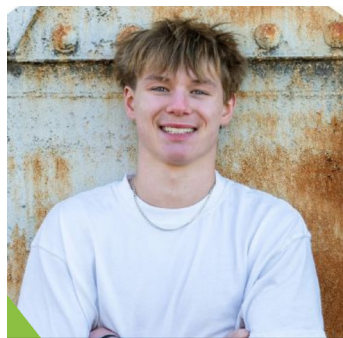
Ella
THOMPSON

2026 Scholarship Recipient



Myles
TJADEN

2026 Scholarship Recipient



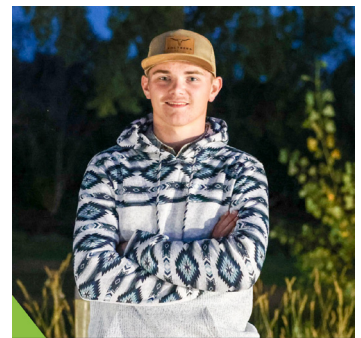
Nash
DELGER

2026 Lineman Scholarship Recipient



Hale
DIETERICH

2026 Lineman Scholarship Recipient



Cordell
HOEFT

2026 Lineman Scholarship Recipient

Summer Shift: Reducing Peak Demand Together

Small changes in energy use can lead to big savings for all members

Using electricity is part of daily life, but when you use it can make a big difference. The Summer Shift program encourages members to move non-essential electricity use to before 11 a.m. or after 7 p.m., from June through August.

Electricity costs are typically highest during the middle of the day when demand increases. By shifting activities like laundry, dishwashing, or other household chores to off-peak hours, members can help the cooperative reduce expensive peak-time power purchases. While this doesn't necessarily reduce the amount of energy used, it helps lower overall wholesale power costs for the cooperative, savings that ultimately benefit all members.

When more members participate, the impact grows. Small changes in daily routines can make a meaningful difference in helping keep electric rates more stable while supporting a more efficient energy system for everyone.



Karrie Pringnitz
Director of Finance & Admin.



Tips for Doing the Summer Shift

- Set your thermostat to 78 degrees, or a few degrees higher than normal.
- Closing curtains and shades will help the home feel cooler, longer.
- Using a ceiling fan or table fan throughout the afternoon will help circulate air.
- Set up a schedule for your smart thermostat and smart lighting options.
- Charge electric vehicles overnight.
- Set the water heater to 120 degrees.
- Wash dishes in and ENERGY STAR dishwasher instead of by hand.
- Open the dishwasher after the wash cycle to let the dishes air dry.

Rebates Available

Save Energy & Money With Rebates

Planning upgrades to your home or business this summer?

Before you buy, check to see if your improvements qualify for a rebate from Heartland Power Cooperative!

We offer rebates on a wide range of energy-efficient upgrades, including:

- Appliances & appliance recycling
- Water heaters
- Lighting & windows
- Heating and cooling systems
- Motors & energy audits
- Water conservation equipment
- Agricultural equipment

Rebate forms are available at heartlandpower.com/rebates.

To qualify, be sure to submit your rebate form and invoice within 6 months of the purchase or installation date, and within the 2026 calendar year.

Start saving energy - and money - today!

HPC Heartland POWER COOPERATIVE		2026 ENERGY EFFICIENCY & CONSERVATION INCENTIVES	
Your Touchstone Energy® Cooperative		REBATE FORM	
Return completed form and required paperwork to Heartland Power Cooperative PO Box 78 St. Ansgar, IA 50472 or email to energy@heartlandpower.com			
MEMBER NAME: _____	EMAIL: _____	ACCOUNT NUMBER: _____	
ADDRESS: _____	CITY: _____	STATE: _____	ZIP: _____
INCENTIVE USED FOR: <input type="checkbox"/> RESIDENCE <input type="checkbox"/> FARM <input type="checkbox"/> COMMERCIAL <input type="checkbox"/> INDUSTRIAL/GOVERNMENT <input type="checkbox"/> OTHER _____	DATE: _____ PHONE: _____		
GENERAL REBATE INFORMATION			
<ul style="list-style-type: none"> • Must be purchased and/or installed in 2026 (Jan 1 - Dec 31, 2026) • Submit rebate form, copy of your invoice including brand & model #, and Blue Energy Star label if applicable • Rebates are in place through December 31, 2026 or until funds are depleted. • FOR ALL REBATES Rebate application form and copy of receipt must be submitted within 3 months of purchase/installation and no later than January 6, 2027. • Rebate cannot exceed purchase cost. 			
CUSTOM REBATES			
<p>Please Note: Commercial and agricultural customers that install certain types of energy saving equipment and/or incorporate energy efficiency measures may qualify for custom rebates. New and existing facilities are eligible. Please contact us for details.</p>			
HOUSEHOLD APPLIANCES PLEASE INCLUDE A COPY OF YOUR INVOICE & ENERGY STAR LABEL			
<input type="checkbox"/> Clothes Dryer (\$25 each) Must be Energy Star & must be electric Model # _____ <input type="checkbox"/> Clothes Washer (\$25 each) Must be Energy Star Model # _____ <input type="checkbox"/> Dishwasher (\$25 each) Must be Energy Star Model # _____ <input type="checkbox"/> Refrigerator (\$25 each) Must be Energy Star and 10 cubic ft. or greater Model # _____ <input type="checkbox"/> Dehumidifier (\$25 each) Must be Energy Star Model # _____ <input type="checkbox"/> Inductive Range (\$25 each) Model # _____ <input type="checkbox"/> Freezer (\$25 each) Must be Energy Star and 10 cubic ft. or greater Model # _____ <input type="checkbox"/> Recycling - Freezer (\$50 each) Must be working appliance <input type="checkbox"/> Recycling - Refrigerator (\$50 each) Must be working appliance <input type="checkbox"/> Recycling - Room Air Conditioner (\$50 each) Must be working appliance <input type="checkbox"/> Washer/Dryer Combo (\$50 each) Must be ventless heat pump drying Model # _____			
			TOTAL APPLIANCE REBATE REQUEST \$ _____
WATER HEATING PLEASE INCLUDE A COPY OF YOUR INVOICE			
<p>Electric water heater must have uniform energy factors (UEF) indicated below. Water heater must be controlled by the cooperative's load control program. Rebate cannot exceed purchase and installation or repair costs. Submit rebate form with a copy of your invoice/receipt showing the efficiency or repair. (Tankless water heaters NOT included)</p>			
<input type="checkbox"/> 50-74 Gallon: UEF 0.88 or above (\$250/unit) UEF _____ Gallons: _____ <input type="checkbox"/> 75-99 Gallon: UEF 0.88 or above (\$500/unit) UEF _____ Gallons: _____ <input type="checkbox"/> 100+ Gallon Capacity: UEF 0.88 or above (\$650/system) UEF _____ Gallons: _____ <input type="checkbox"/> Heat Pump Water Heater - Load control not required, UEF ≥ 2.0 or above (\$1,000/unit) <input type="checkbox"/> Water Heater Repair (\$75/repair) <input type="checkbox"/> Marathon Water Heaters (Available for purchase from Heartland Power Cooperative) <75 Gallon (\$75.00) 75+ Gallon (\$1,000)			
			TOTAL WATER HEATING REBATE REQUEST \$ _____
LIGHTING PLEASE INCLUDE A COPY OF YOUR INVOICE			
<p>(All lighting rebates capped at 50% of cost)</p>			
<input type="checkbox"/> LED Bulb (\$0.50/Bulb) 5 bulb min. Quantity _____ x \$0.50/Bulb = _____ <input type="checkbox"/> LED Exit Sign (\$5/sign) Quantity _____ x \$5/Sign = _____ <input type="checkbox"/> Occupancy Sensor (\$5/each) Quantity _____ x \$5/Sensor = _____ <input type="checkbox"/> LED Fixture (\$0.50/800 lumens) Lumens: _____ x \$0.50/800 Lumen = _____ Model # of Fixture _____			
			TOTAL LIGHTING REBATE REQUEST \$ _____
WINDOWS PLEASE INCLUDE A COPY OF YOUR INVOICE			
<p>Primary heating source must be heat pump or electric. Qualifying windows must be a minimum of 8 square feet. Window must be Energy Star rated. (U-factor of .35 or less.) Maximum of \$150 rebate per member.</p>			
			x \$15 per opening = TOTAL WINDOW REBATE REQUEST \$ _____



Learn More
heartlandpower.com/rebates



Built for Reliability

How loop feeds help keep electricity flowing during outages

Recent storms across our area reinforce just how important a reliable electric system is. High winds, lightning, and fallen trees can cause outages with little warning. When they do, our crews work safely and efficiently to restore power to as many members as possible. One of the important tools we use to reduce outage times is something called a loop feed system.

What is a loop feed?

A loop feed is a distribution line arrangement where two feeders are connected together through a normally open point. In other words, a loop feed is a way of designing electric distribution lines so power can flow from more than one direction instead of relying on a single power source.

Under normal conditions, each substation serves its own area through dedicated power lines, or feeders. However, those feeders are connected at certain points with switches that are normally left open. This setup allows crews to reroute electricity during an outage when needed.

Outage Example: The Process of Power Restoration

When damage occurs on a line, such as a tree falling during a storm, crews first locate and isolate the damaged section. Once the affected area is safely disconnected, crews can close the normally open switch and feed electricity into the healthy portion of the line from another substation. This process is often called “backfeeding.”

Why Co-ops Use Loop Feeds

Loop feeds are especially valuable in rural areas where electric lines often cover long distances and are exposed to severe weather, wildlife and vehicle accidents. They give crews more flexibility during outages, improve overall reliability and can even allow maintenance work to be completed with fewer service interruptions.

The advantage of loop feeds is that they help restore power to many members sooner, even before permanent repairs are complete.

The Limitations of Loop Feeds

While loop feeds often allow us the opportunity to restore power to many members quickly, they are not a perfect solution for every outage. The alternate feeder must have enough available capacity to safely carry the additional electrical load, and system operators must carefully monitor voltage levels, equipment settings and overall system balance before making switching changes. In some situations, only part of the affected area can be restored until repairs are complete.

Keeping the Lights On

Designing and maintaining a system utilizing loop feeds are one of the many ways electric cooperatives work behind the scenes to improve reliability for members.

Investments in technologies like loop feeds, along with ongoing maintenance, system upgrades and vegetation management, all help strengthen the reliability of the grid and reduce outage times when severe weather strikes.

“ Investments in technologies like loop feeds help strengthen the reliability of the grid and reduce outage times when severe weather strikes.

Our commitment goes beyond simply restoring power after a storm. We are continually planning, upgrading and preparing for the future so we can provide safe, reliable electric service for you, your families and your businesses. Keeping the lights on for the members we serve remains at the heart of everything we do.



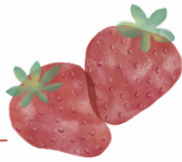
Dave Low
Director of Operations

Co-op Kitchen

Enjoy these member-submitted recipes!

Strawberry Pie

FROM THE KITCHEN OF LORETTA MERRITT



Crust:

- 2 Tbsp milk
- 2 Tbsp sugar
- 1 tsp sugar
- ½ cup oil
- 1 ½ cup flour

Mix oil & milk. Add flour, sugar & salt, mix well. Pat into 9" pie pan. Bake at 375° for 15 minutes.

Sort one pint of smaller berries & cook in water, boiling for 3-4 minutes. Mix sugar with cornstarch and add to glaze, stirring constantly until glaze is clear and thick, about 3 minutes. Set aside to cool slightly. Arrange remaining berries in pie shell. Pour lukewarm syrup over, coating every berry. Chill & serve with whipped cream.

Filling:

- 3 pints strawberries
- 1 cup sugar
- ½ cup water
- 3 Tbsp cornstarch

Want to see your recipe featured?

Members with their recipe published in the newsletter will receive a \$5 bill credit. For September's recipes send in a back-to-school favorite: quick, family-friendly meals perfect for busy weeknights. These can be mailed to our office or emailed to us at energy@heartlandpower.com by August 20th.

STRAWBERRY ICE CREAM PIE

FROM THE KITCHEN OF MARY BERKELAND

- 1/3 cup peanut butter
- 1/3 cup corn syrup
- 2 cup rice krispies
- 1 quart vanilla ice cream
- 2 cups strawberries crushed with a little sugar added

Mix peanut butter and corn syrup together, then rice krispies. Pat rice krispie mixture into a greased pie tin. Mix together strawberries and ice cream. Put ice cream mixture on top of rice krispie crust. Freeze for 4 hrs or overnight. Thaw in the fridge for 30 minutes before cutting. Enjoy!

Strawberry Fluff

FROM THE KITCHEN OF DEBRA R FREEMAN



- 1 cup strawberries, lightly mashed (if using frozen, drain well)
- 2 egg whites
- 1/2 C Sugar

Using a deep bowl, beat strawberries and egg whites until well mixed. Add sugar and continue beating on high until consistency of whipped cream. Serve over white cake or angel food cake.

Store in the refrigerator. If it lasts longer than 1 day, you may need to beat again. Enjoy!

This is a family recipe from the 1950s; eaten every spring since!

Heartland Power's Privacy Policy

At Heartland Power Cooperative, confidentiality is very important to us. As we continue to improve and expand our services and delivery channels, we recognize our customers' needs and desire to preserve their privacy and confidentiality. Heartland Power Cooperative recognizes the trust you have placed in us and are committed to safe-guarding the privacy of our customers' information. The following policy affirms our continued commitment to preserving customer confidentiality.

The Information We Collect

We receive and retain information about our customers through many sources:

- information we receive from you on applications or other forms
- information about your transactions with us, our affiliates, or others, and
- information we receive from a consumer reporting agency.

The Way We Use Information

We limit the use and collection of non-public personal information to that which is necessary to maintain and administer financial services. We do not share this information with outside parties unless:

- The information is provided to help complete a customer initiated transaction such as credit reporting agencies, document processing companies, etc.
- The disclosure is required by law (e.g. subpoena, investigation of

fraudulent activity, etc.) or

- The disclosure is required by banking regulation (e.g. Fair Lending Reporting Act, Home Mortgage Disclosure Act.) When customer information is provided to any of the third parties mentioned above, that third party must agree to adhere to privacy principles that provide for keeping such information confidential.

Limiting Employee Access to Information

Heartland Power Cooperative limits employee access to customer information to those with a business reason for knowing such information. All of our employees are educated on the importance of confidentiality and customer privacy. Any employee that violates the financial privacy of our customers will be subject to appropriate disciplinary measures and possible termination.

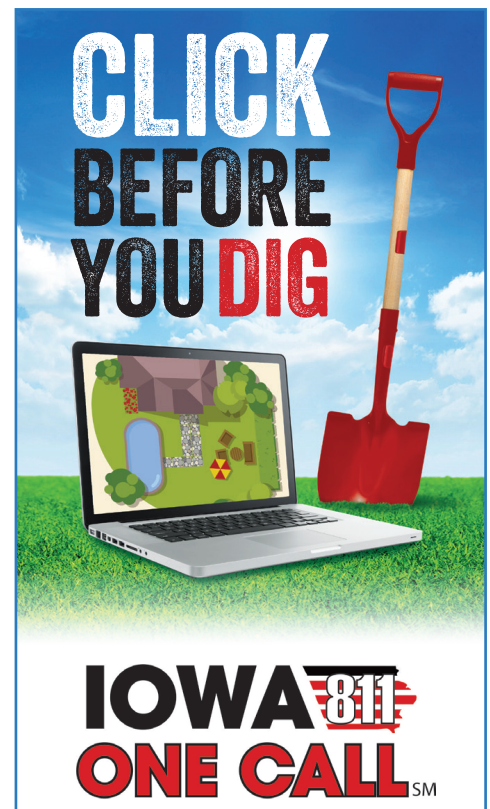
Protection of Information via Established Security Procedures

To prevent unauthorized access, maintain data accuracy and ensure the correct use of information, we have put in place appropriate physical electronic and managerial procedures to safe-guard and secure the information.

Maintaining Accurate Information

We have established procedures so that our customers' financial information is accurate, current and complete in accordance with reasonable commercial standards.

Heartland Power Cooperative will respond to requests to correct inaccurate information in a timely manner. At Heartland Power Cooperative, we value our customer's relationships. We want you to understand how we use the information you provide and our commitment to ensuring your personal privacy. If you have any questions about how Heartland Power protects your information, please contact us at 641-584-2251 or email energy@heartlandpower.com.



www.iowaOneCall.com

Notify Iowa One Call by calling 811 or making an on-line request 2-3 days before you dig. You'll provide information about where you are planning to dig and what type of work you will be doing. A locator will be sent on behalf of each affected utility company to mark the approximate location of your underground utility lines. Remember, any privately-owned lines installed beyond the meter are the homeowner's responsibility.

Annual Complaint Procedure Notice

If you have a complaint with your Touchstone Energy Cooperative, please call or write to Heartland Power Cooperative Office, Attention: Jon Leerar, P.O. Box 65, Thompson, IA 50478.

If your complaint is related to service disconnection, safety or engineering standards, or renewable energy and Heartland Power Cooperative does not resolve your complaint, you may request assistance from the Iowa Utilities Board by calling (515) 725-7300, or toll-free 1-877-565-4450, by writing to 1375 E. Court Avenue, Des Moines, IA 50319-0069, or by email to customer@iub.iowa.gov.



Providing members with safe, reliable, affordable electricity and enhancing the quality of life for members and their local communities.

GENERAL INFORMATION

Office Hours 7:00 a.m. - 5:00 p.m. M-Th
Office: 641.584.2251
Toll Free: 800.349.2832

Thompson 11464 Hwy 9 | P.O. Box 65
Thompson, IA 50478

St. Ansgar 110 Industrial Park Dr. | P.O. Box 70
St. Ansgar, IA 50472

Outage Reporting Thompson: 641.584.2200
St. Ansgar: 641.713.4646
System Wide: 888.417.3007

Secure Payment Phone Line 855.939.3777
Digging & Line Location Call 811

Website www.heartlandpower.com
Email energy@heartlandpower.com
Facebook facebook.com/heartlandpower
Twitter twitter.com/heartland_power
Instagram instagram.com/heartland_power

CEO/GENERAL MANAGER Jon Leerar

BOARD OF DIRECTORS

Don Knudtson, *President* 641.590.1416
Mark Kingland, *Vice-President & DPC Director* 641.590.4400
Vince Morische, *Secretary* 641.220.4841
Tricia Jaeger, *Treasurer* 641.330.6903
Michael Cole
Asst. Secretary-Treasurer 641.512.1474
Roger Solomonson, *Director* 641.590.0049
Steve Groth, *Director* 641.590.2581



FOOD, PRIZES, AND FUN FOR ALL AGES

You're Invited!
August 3 | Thompson, IA

**Member Appreciation Event
& New Facility Open House**



Get Connected with SmartHub

With SmartHub, you can:

- Make payments, view payment history, and print statements
- Monitor your energy use by day, month, or average usage
- Update your account information and set up text or email alerts for energy use, billing, and account updates

To sign up:

- You can sign up for SmartHub at heartlandpower.com/smarthub. To get started, you will be required to enter your account number, last name or business, and e-mail address.

Scan the QR code to get started.



POWER OUTAGE TEXT NOTIFICATIONS AVAILABLE TO HEARTLAND POWER MEMBERS

- Be alerted of power outages at your location
- Receive notification when power is restored

Sign up at heartlandpower.com/outages

MONTHLY QUIZ

\$25 BILL CREDIT WINNER
Mark DeLawyer, Joice

THIS MONTH'S QUESTION
When and where is Heartland Power Cooperative holding its Member Appreciation & Open House event?

QUIZ GUIDELINES
Each member who sends in the correct answer by the 20th of the month will be entered in a drawing for a \$25 bill credit. Mail or email quiz answers to energy@heartlandpower.com.